



# EUROPEAN QUARTER CHARTER & MANIFESTO OPEN, WELCOMING & DIVERSE

Presentation to the EQ local committee  
5 April 2023

Prepared in collaboration with the King Baudouin Foundation and the European Quarter Fund



## Introduction

*An initiative of the European Quarter Fund*

*Conscious of the urgent need for change the European Quarter fund members have agreed on a shared vision on the future of the district or “**Manifesto**” and also on a concrete actions to start the transition of the district on short term the “**Charter**” . The EQF is only one of stakeholders that will have to cooperate to deliver this long-term vision therefore the Manifesto declares the intentions of the EQF but will need to evolve. The charter on the other side is a document containing practical urbanism actions that EQF member regard as a commitment.*



Who is the European Quarter Fund (EQF):

The EQF was created in 2001 with the aim to contribute to the improvement of the image, functioning and redevelopment of the Brussels European Quarter.

The fund includes approx. 40 members, representative of all areas of private and public life.

For more information, visit their [website](#).

# The EU district and its challenges

## Context

The EU district is not only the historic seat of the European institutions, but it is also the largest employment and cultural centre in Belgium.

Over the last decade the district has been increasingly attractive for new inhabitants & retailers. New flagship European cultural offering has established the district as the country second most visited spot. Areas like Jourdan or Squares have become vibrant mixed used urban hubs.

The core Leopold district however remains dominated by office use with only 3.000 inhabitants for ca 90.000 office workers before covid.

The changes in workplace and mobility have been accelerated by the pandemic and are both a serious challenge and an opportunity to the EU district. An expected increased vacancy in office spaces will offer many possibilities of reconversion along the philosophy of the EU New European Bauhaus, pleading for living spaces and places that are aesthetically beautiful, socially inclusive and environmentally sustainable.



# THE MANIFESTO

*A long term vision on the district*

*The manifesto prepared by the EQF is based on wide consultations and represents its long term vision on the district.*

*We realise that the EQF is only one stakeholder in the future of the district and therefore our Manifesto represents the EQF current views towards what needs to become a shared vision.*



# The EQF Manifesto or long-term vision is based on wide consultations

*The Manifesto*



After a large consultation with the key district user groups and stakeholders ranging from public authorities to inhabitants' associations (23 interviews), the European Quarter Fund (EQF) has decided to **develop a strategic vision** to act on some of the EU District's key issues.

The EQF has aligned its strategy and proposed actions with the regional government currently preparing a new Urban Planning Framework. The main actions identified are focusing on **4 key pillars: Increase Functional Mix, Support Shift to Soft Mobility, Create Better and Greener Public Space, Deepen European & Cultural Identity.**



**Befimmo**



# The Manifesto 4 priority areas supporting our long-term vision

*The Manifesto*



## Increased Functional Mix

Increase, where possible, non-office functions at the micro neighbourhood level, with a particular focus on the Leopold district. Act rapidly on ground floor activation by making them transparent, lively and open for encounters between people.



## Create Better & Greener Public Space

Increase green surfaces at street- and roof-levels, open inner buildings courtyards, and reduce the number of cars on public space. A great work neighbourhood is also a place where people like and want to live.



## Support Shift to Soft Mobility

Drastically reduce transit and local car traffic. Break the Loi/Belliard urban walls by creating North-South soft mobility paths. Support the mobility shift by improving active mobility infrastructure within office buildings and creating a true ecosystem for alternative mobility.



## Deepen European & Cultural Identity

Make the European identity of the district more visible and increase the integration of the local cultural offering. Create stronger links between the sub-districts (Leopold, Jourdan, Squares, Cinquantenaire). Show the democratic character of the fabric of Europe.

# THE CHARTER

*The EQF members short term commitments*



As we realise that our long-term vision “Manifesto” will require the alignment with other external stakeholders the EQF members decided to commit on a number of practical actions fostering material change on the short term whilst supporting our long-term vision.

The EQF member are committing to implement these changes in the buildings the own or operate as much as technically feasible on the short term.

The verify the feasibility and impact of these tactical actions the EQF has done an audit **on a pilot area in the Leopold District**. (21 buildings have been audited between Square de Meeûs and Square Orban).



Overview Map

- Office Buildings - Visited
- Office Buildings - Not Visited
- Historical or Residential Buildings
- Plots

# The charter: our immediate commitments to support our charter and long-term vision



Mixed use



Public space



Mobility shift



Culture & Identity



## Activate Ground Floors

Where possible, support the infill of the ground floors with open functions (retail, café, bike repair, art, coworking, places of dialog and encounter, etc.) At least, ensure they are transparent and interact at street level.

✓

✓

✓

✓



## Cycling Friendly buildings

Promote active mobility by ensuring cycling is welcome for all users (incl. visitors) from facilities provision to services and social activities in favour of active mobility.

✓



## Open Courtyards

Where possible, open inner courtyards and increase green surfaces. Create new use cases for courtyards and infill with public uses.

✓

✓

✓

✓



## Green Roofs

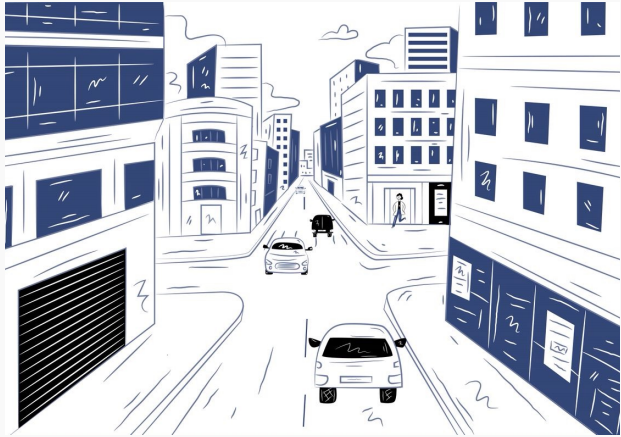
Where technically feasible, create green rooftops accessible to occupiers, or alternatively convert to extensive or intensive green surface.

✓

✓



# We have focused our visits on the feasibility of 4 key tactical actions

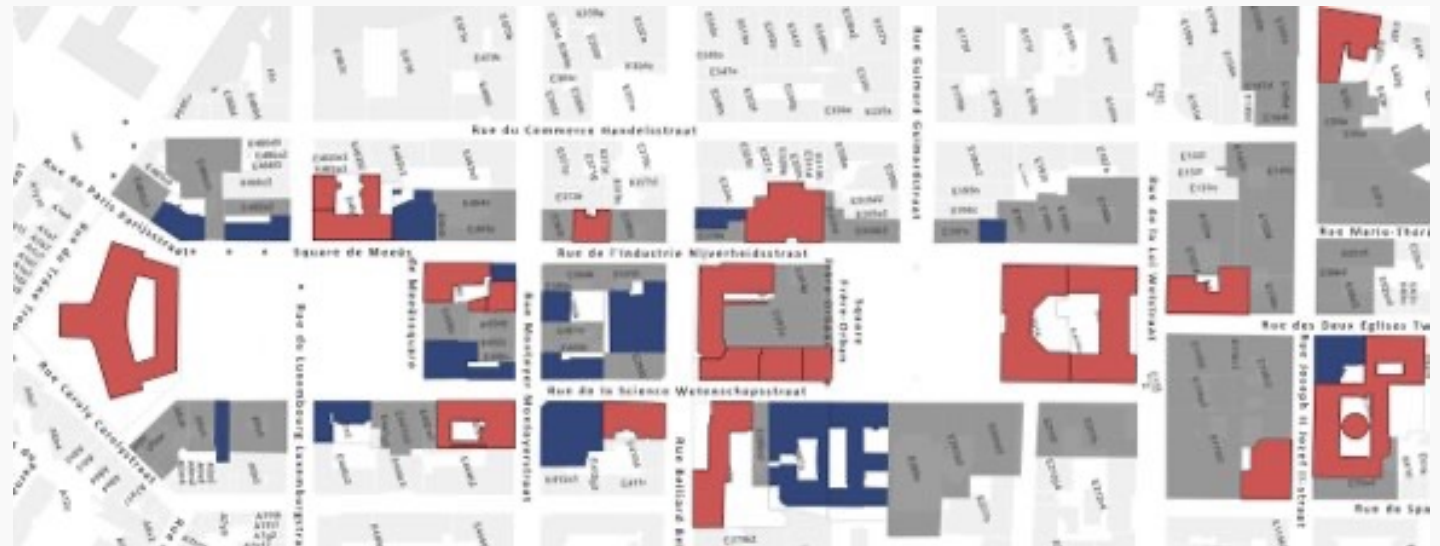


# THE CHARTER

## *Pilot area feasibility*



The verify the feasibility and impact of these tactical actions the EQF has done an audit **on a pilot area in the Leopold District**. (21 buildings have been audited between Square de Meeûs and Square Orban).




Overview Map

- Office Buildings - Visited
- Office Buildings - Not Visited
- Historical or Residential Buildings
- Plots


# The 4 key actions of our Charter will have material impact on the district


Results of the pilot areas audit




**61%**  **Ground floor transparency:**  
Only 39% of the façades analyzed are transparent. **46%** have the potential to be made visually open.

**4**  **Inner courtyards:**  
**4 buildings** with an inner courtyard have the potential **to be accessible to the public.**

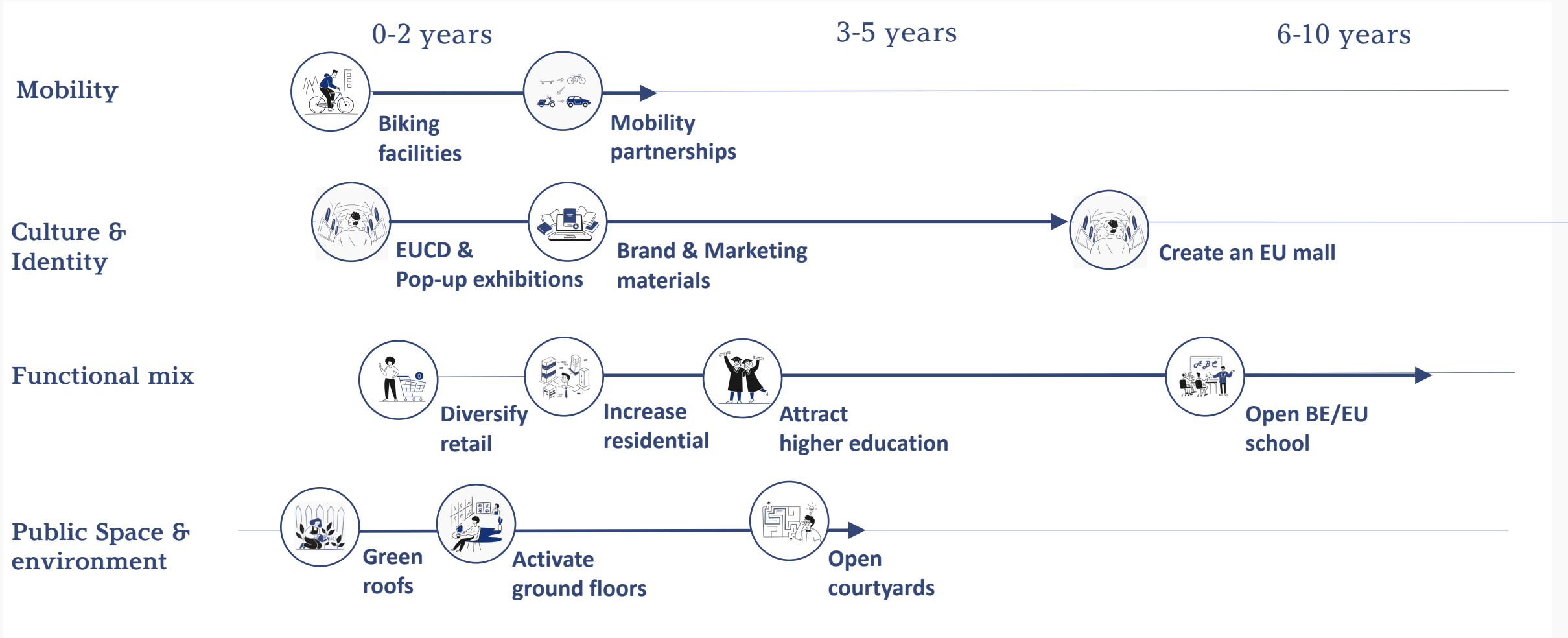
**65%**  **Ground floor infill:**  
**Two-thirds** of the buildings analyzed have no ground floor infill activation.

**76%**  **Soft mobility facilities:**  
**76%** of buildings have average or poor facilities. **Only 4 buildings** have good facilities to support the use of soft mobility.

**31%**  **Greening the roofs:**  
31% of roofs analyzed, **(9,657 sqm)** have the potential for greening.

**53%**  **Shared mobility services:**  
**Only the EU-occupied buildings** offer single-mode services. The others do not have any services in place.

# Timeline and overview of all key proposed actions proposed (short- to long-term)



## Next steps

*From audit to full scale deployment*

CHARTER

Census of all ground floors that can be activated (ongoing)

Participation in the European Urban Initiative (CoRRK) of the Brussels Region, as leader of the work package on activation of the ground floors

Recruitment of a person by the EQF

- to operationalize the output of the audit
- to extend the area surveyed to the whole EQ

Communication effort:

- Brochure
- Website ([eqf-manifesto.eu](http://eqf-manifesto.eu))
- LinkedIn

